

Trees and Shrubs for Seasonal Interest and Wildlife



Mt. Airy Fothergilla

- Native
- *Fothergilla major*
'Mount Airy'
- 4'-5'x 4'-5'
- Sun to part shade
- Moist or well drained soil, acidic
- Honey scented spring blooms, beautiful fall color
- Deer Resistant



Sweet Bay Magnolia

Magnolia virginiana

- Native
- Grows 20'-30' tall, often with multiple trunks, 15'-20' wide
- Full sun to part shade
- Wet to well drained soil
- Semi-evergreen
- Deer resistant



Fringetree

- *Chionanthus virginicus*
- To 20' x 20'
- Piedmont native
- Moist soil, sun – pt. shade
- Fragrant blooms in spring
- Deer???



Redbud

- *Cercis canadensis*
- Native
- Lives ~ 20 yrs.
- Sun-part shade
- Well drained or moist soil
- 15'-20' tall and wide
- Deer – protect when young



Redbud Cultivars

'Forest Pansy'

'Merlot'



'Hearts of Gold'



Vitex, Chaste Tree

- *Vitex agnus-castus*
- Not native
- Full sun
- Well drained soil -
drought tolerant
- 10'-15' high and wide
- Aromatic blue flowers
all summer
- Honeybees love it
- Very deer resistant



Vitex, Chaste Tree

When grown as a shrub,
can cut back each year
like butterfly bush (back
to 2' tall)



Tree form specimens
usually have multiple
trunks

Sweet Pepperbush

Clethra alnifolia

- Native
- Sun – part shade, well drained or moist soil
- Cultivars:
 - ‘Hummingbird’, ‘Sixteen Candles’, dwarf white, 3’ x 6’
 - ‘Ruby Spice’, upright pink, 8’ x 5’
- Blooms in June-July, exceptional fragrance, attract butterflies and pollinators
- Deer resistant



Sweet Pepperbush



'Ruby Spice'



'Sixteen Candles'

American Beautyberry

Callicarpa americana

- Native
- Tough native shrub for sun to part shade
- Magenta berries late summer and fall
- Grows 3'-6' tall and wide
- Can be cut back to 1' in early spring to produce denser shrub
- Well drained soil
- Deer resistant



Native Vines

- Available from garden centers:
 - Coral Honeysuckle
 - Carolina Jessamine
 - Cross Vine –
Bignonia capreolata
 - American Wisteria –
Wisteria frutescens
- All need sun, well drained-moist soil and support!



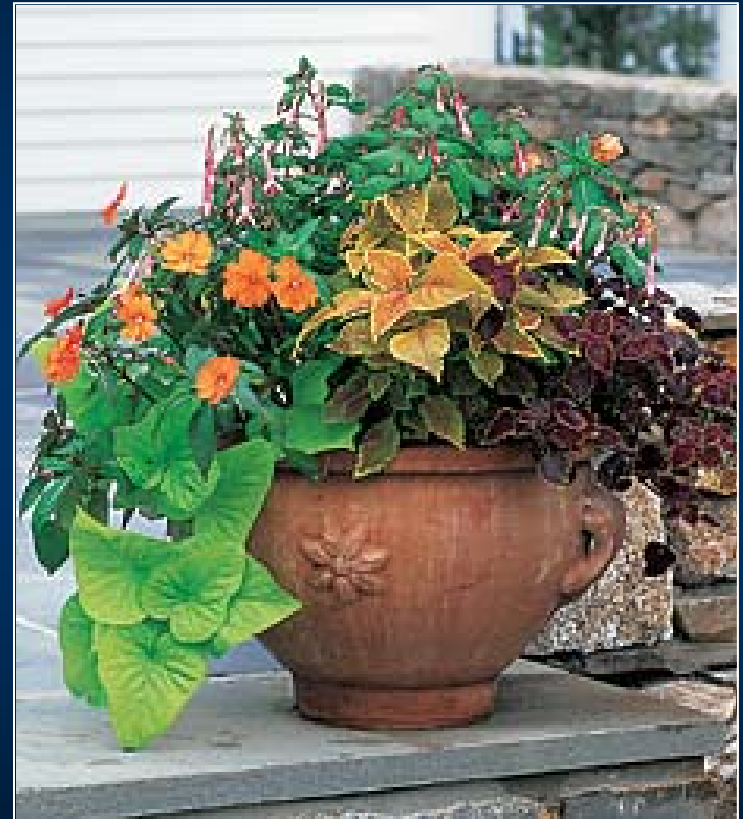
Coral Honeysuckle, *Lonicera sempervirens*



Carolina Jessamine, *Gelsimium sempervirens*

Herbaceous Plants

- **Annuals** – only live one season
 - Resource intensive
- **Perennials** – return 3 or more seasons from same roots; Most bloom for 3 - 6 weeks
- **Ornamental Grasses** – provide nice texture contrast

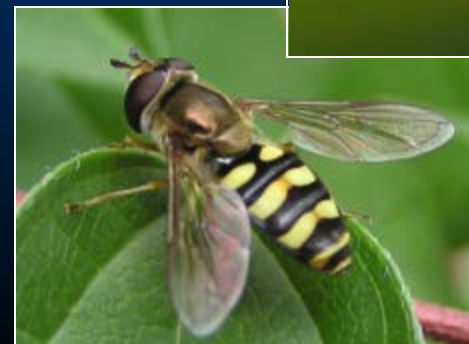


Annuals are best reserved for containers

Flowers:

More than just a pretty face

- Provide **pollen and nectar** for beneficial insects and pollinators!
 - **Pollinators:** honeybees and native bees, moths, butterflies, wasps, hummingbirds
 - **Beneficials:** Both adult and juvenile stages - ladybugs, lacewings, hoverflies, and many more!



- **Pollen and nectar are less accessible or absent in double forms of flowers**

- ‘Old fashion’ single types are best for pollinators



Zinnia

Wild Columbine

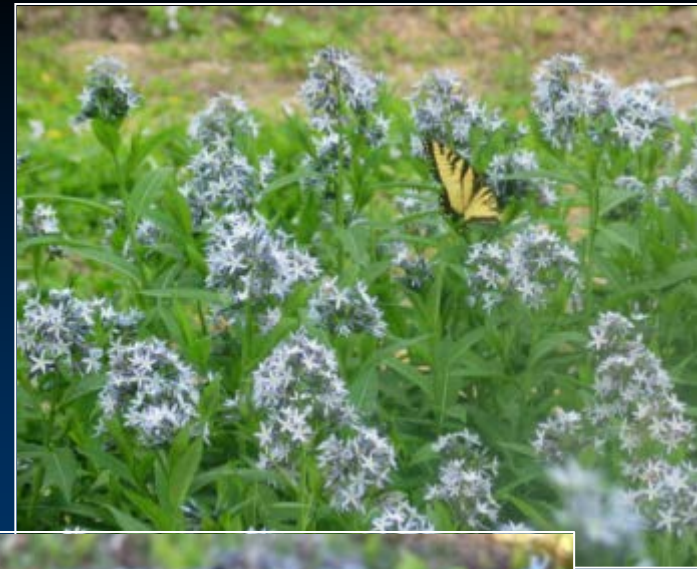
- *Aquilegia canadensis*
- Blooms lt. March - May
- Sun or shade, well drained soil
- 12" – 24" tall in bloom
- Attracts butterflies and hummingbirds
- Will naturalize in the garden by self seeding
- Deer resistant



Bluestar

Amsonia tabernaemontana

- Native
- Tough, long lived clumping perennial
- Attractive clusters of pale blue flowers in spring
- Grows 1 to 2' tall and wide
- Sun to part shade, wet to well drained soil
- Bees love it, deer don't!



Arkansas Blue Star

Amsonia hubrichtii

- 3' x 3'
- Sun
- Long lived, clump forming
- Flowers in spring
- Yellow autumn color
- Attractive, ferny foliage all season
- Long lasting cutflower
- DEER RESISTANT



Arkansas Blue Star

- Fall color



False Indigo

- *Baptisia* - hybrids and species
- 3' - 4' x 2' - 3'
- Sun to light shade
- Drought tolerant
- Very long lived, clump forming
- SE Natives
- **DEER RESISTANT**



‘Purple Smoke’



‘Carolina Moonlight’



Siberian Iris

Iris siberica

- Not native
- 3' tall x 2'-3' wide
- 'Caesar's Brother' - Dark purple flowers
- Sun to part shade
- Long lived, clump forming
- Bloom in spring
- Nice winter presence
- DEER RESISTANT



Can grow in shallow water

Texas Sage

- *Salvia greggii*
- Native to Texas and Mexico
- Many varieties
- 2'-4' x 2'-4' depending on variety
- Sun to light shade
- Well drained soil – drought tolerant
- Blooms spring and fall
 - Trim after blooming
- Great for hummingbirds
- DEER RESISTANT



Purple Coneflower

- *Echinacea purpurea*
- Many varieties
- Sun, well drained soil
- Native to E. US
- Blooms summer
- Attracts butterflies, pollinators – double varieties not as effective
- DEER RESISTANT



Coneflower Hybrids

E. purpurea x *E. paradoxa*



‘Sundown’



‘Sunset’



‘Sunrise’



‘Harvest Moon’

Butterfly Weed

Asclepias tuberosa

- Native
- Tough clump forming perennial
- Vibrant orange flowers in spring and early summer
- Sun to light shade
- Well drained soil
- Very drought tolerant
- Larval host plant for the Monarch butterfly
- Deer resistant



Swamp milkweed

Asclepias incarnata

- Native
- 3' -4' tall and wide
- Spring/early summer flowers, pink or white
- Sun to part shade
- Wet to moist soil
- Monarchs! Attracts many pollinators
- Deer resistant



Monarchs



Mountain Mints

Pycnanthemum species

- Native – 3-4 species
- Bloom mid-late summer
- Sun to light shade
- Moist soil
- 3' tall and wide
- The best pollinator plants!
- Deer resistant



Pycnanthemum loomisii



Pycnanthemum tenuifolium

Joe Pye Weed

- Native
- Sun – pt. shade
- Wet to moist soil
- *Eutrochium dubium*
 - 4'-5' tall x 3'-4' wide
 - More common coast
- *E. fistulosum*
 - 5'-8' x 3'-4'
 - More common piedmont
- *E. purpureum* and *E. maculatum* in Mountains
- Deer resistant



'Fireworks' Goldenrod

- Native
- *Solidago rugosa*
- 2'-3' tall and wide
- Pollinators love it! Blooms Aug-Sept.
- Sun – pt. shade
- Moist to well drained soil
- Deer resistant



Mexican Bush Sage

Salvia leucantha

- 4' x 6' tall and wide
- 'Santa Barbara'
 - 3' tall and wide
- Sun
- Long lived, spreading clump
- Well drained soil, drought tolerant
- Fall blooming
- DEER RESISTANT



Yucca, Adam's Needle

- *Yucca filamentosa*
- Evergreen, Native
- 2' x 2', summer flower spikes to 5'
- Sun, well drained soil - drought tolerant
- This species NEVER FORMS TRUNKS
- Broken roots regenerate new plants
- Deer resistant





**Yucca
'Color Guard'**



**Yucca
'Bright Edge'**



Ornamental Grasses

Grasses in general

- Require full sun
- Cut back lt. winter before new growth begins
- **DEER RESISTANT**

Miscanthus, Maiden Grass,
has become invasive in
mountains and some areas of
piedmont



Native Grasses

- Many do best in a meadow setting
 - Little Blue Stem
 - Broomsedge
 - Indian Grass
- In landscape, get large and floppy!
- Competition keeps them compact in the wild



Little
Blue-
stem

Indian
Grass

Panic Grass, Switch Grass

- *Panicum virgatum*
- Native to E. US
- Full sun, drought tolerant
- Moist-well drained soil
- **‘Prairie Fire’** 3’ x 2’, burgundy leaf tips
- **‘Northwind’** 5’ x 2’, upright
- **‘Cloud Nine’** large, 8’ x 6’, strong stems



‘Cloud Nine’ in fall



**‘Shenandoah’
‘Prairie Fire’**

Muhly Grass

*Muhlenbergia
capillaris*

- 4' tall in bloom, 3' x 3' mound
- Blooms late fall
- Native to SE in sandy habitats
- Sun!
- Well drained soil



Perennials for Shade



Deer Love Hosta!

Variegated Solomon's Seal

Polygonatum odoratum
'Variegatum'

- Not native
- 2' tall x 3' wide
- part to full shade
- moist, well drained soil
- Long lived, spreading rhizomes
- Arching stems, white flowers in spring
- DEER RESISTANT



Hardy Begonia

- *Begonia grandis*
- Not native
- Part to full shade, moist soil
- 2' x 2'
- Long lived, spreading clump
- Pink flowers through summer, red veined leaves



Helleborus, Lenten Rose

- *Helleborus* hybrids
- Not native
- White, pink or maroon nodding flowers in late winter
- 1' x 2'
- Evergreen foliage
- Shade
- Well drained soil
- Deer Resistant!



Hardy Ferns

- Deer rarely browse ferns
- Most prefer moist, shady areas
- Many native ferns!
- Japanese Painted Fern
 - *Athyrium niponicum*
‘Pictum’
 - Not native
 - Deciduous – dies down in winter



Evergreen Ferns

- Holly Fern
 - *Cyrtomium falcatum*
- Autumn Fern
 - *Dryopteris erythrosora*
- Christmas Fern
 - *Polystichum acrostichoides*, native



Holly Fern



Autumn Fern



Christmas Fern

All ferns
**DEER
RESISTANT**

Explore More Plants!

NCCE Plants Database

<http://plants.ces.ncsu.edu/>

NC STATE UNIVERSITY CAMPUS DIRECTORY | LIBRARIES | MYPACK PORTAL | CAMPUS MAP


NC STATE UNIVERSITY Search

NC State University
A&T State University
COOPERATIVE EXTENSION
Empowering People · Providing Solutions

100 years

Plants [Grow Plants](#) [Buy Plants](#)

Annuals	Poisonous Plants
Carnivorous Plants	Roses
Edible Plants	Shrubs
Ferns	Spring Bulbs
Groundcover	Summer Bulbs
Herbs	Trees
Native Plants	Vines
Ornamental Grass	Water Garden
Perennial Bulbs	Wildflowers
Perennials	All Plants



Pollinator Conservation

www.protectpollinators.org



Growing Small Farms

[Chatham Extension Center](#)

[News](#)

[Farmer Resources](#)

[Web Resources](#)

[Workshops](#)

[What's New](#)

Whatever lofty things you might accomplish today, you will do them only because you first ate something that grew out of dirt.

- Barbara Kingsolver

[Print Content Only](#)

Pollinator Conservation Guide

Photos by [Debbie Roos](#)^{CS}, Agricultural Extension Agent.

[Home](#)

[Photos](#)

[Crop Production](#)

[Pest Management](#)

[Direct Marketing](#)

[Local Farms](#)

[Farmers' Markets](#)

[Buy Local Guide](#)

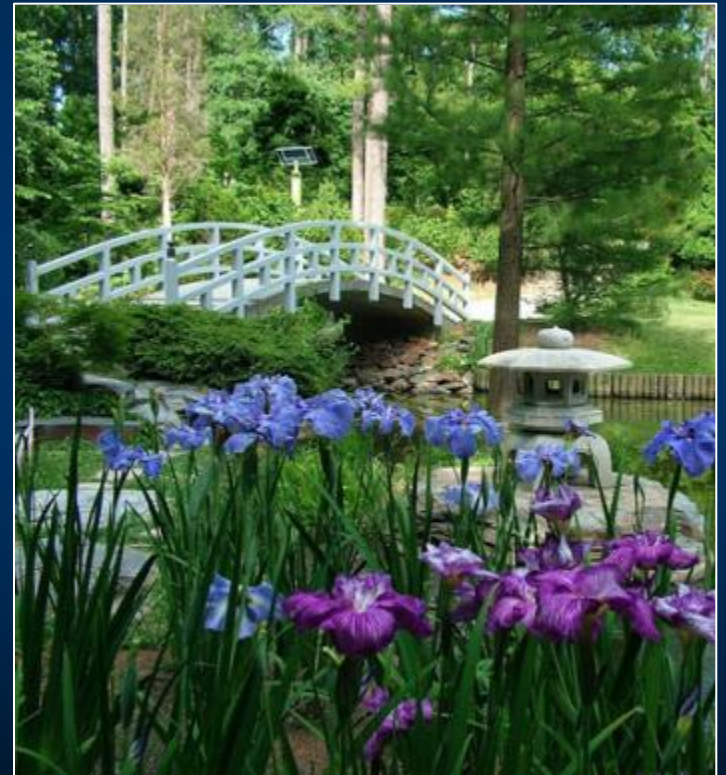
[Pollinator Conservation](#)



Explore More Plants

Visit Public Gardens!!!

- Pollinator Paradise Garden, Chatham Mills - Pittsboro
- JC Raulston Arboretum, Raleigh
- Sarah Duke Gardens, Durham
- NC Botanical Gardens, Chapel Hill



Looking for Something Unusual?

- Big Bloomers, Sanford
- Plant Delights Nursery, Raleigh
 - Check website for open days
- Logan's Trading Center, Raleigh
- Ask your local garden center if they can order it for you!



Next Week: Landscape Care

Morning Class

- Tuesday, 5/5, 9:30 – Noon

Evening Class

- Wednesday, 5/6, 6:00 – 8:30

PLANT SWAP – bring your extra plants (seedlings, transplants, divisions) to share with classmates!