

NEWS FROM

The Cloverfields of Chatham County



June 2016

From your 4-H Program Staff...

The baby chicks and ducks we picked up this month were like the kick off for the game called summer! The momentum that started in April has just increased in the month of May, and it's starting to get very exciting!

We've received word that we will be moving to our new building in late August or early September, and need to start packing up all of our materials and curriculum for the big moving day! It'll be exciting to have a new meeting space and nicer building.

Planning for summer camps is getting really serious now – and we've now got the help of Master Gardeners in Training to join us at day camp! We're growing super special plans for a mobile butterfly house out a NW Park!

June will also see all of our 4-Hers free for summer and setting off on adventurous camps and activities around the state! We'd love to hear what everyone is up to over the next few months and what cool things you learn.

From,

Ginger & Carolyn

A HATCHING SUCCESS AT ELEMENTARY SCHOOLS AROUND CHATHAM COUNTY!



In a record setting year, elementary school students in Chatham County hatched out 89 baby chicks and 86 baby ducks! We are so impressed with how amazing of a hatch rate there was this year -- the care and attention that the students and teachers gave the project was wonderful!

Feedback from the project has been wonderful to hear as well - teachers report that students are better at record keeping and participating, and parents have let us know that students talked about the ducks and chicks every day at home! We're so thankful to be able to bring this project to the elementary schools in the area, and for students to have something to look forward to

Clockwise from top left: chicks raised by Pittsboro Elementary School; a Saxony duckling voices her opinion; a buckeye chick; a crevecour chick; a chicken coop at Staub farm, where the hatchlings returned to; adult Delawares and Buckeye chickens; ducklings raised by Siler City Elementary School.

in the school day. Students will surely miss their small charges, but take comfort in knowing that they are growing up on farms around the area!



Thanks to our wonderful and generous 4-H sponsors:

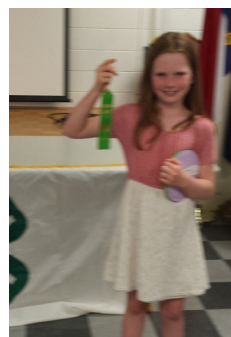


Thanks to all our County Activity Day participants!!

May 9th was our annual County Activity Day in Chatham County, where 4-H members were able to practice their public speaking skills and share their talents with us!

From top left to bottom right:

Ezra Beckerdite presented on steers and oxen, Maliyah Spring presented on fire safety in the home, Evan Carlson presented on the history of computers, Emma Langley presented on her chicken eggs, Katie Carlson presented on goats and showcased her clogging, Molly Carlson presented on bees and honey, Abby Adams presented on her pet rabbit, Rae Fridley presented on the health risks of asthma, and showcased her ballet.



Happy Pollinator Day!

The 9th annual Pollinator Day celebration was held on May 14th on the Chatham Mills lawn. The Lucky Clovers 4-H Club and the Queen Bees Pollinator 4-H Club assisted the Chatham Bee Keepers' Association by running tasting stations where visitors could sample 25 different varieties of honey, hosting a candle making station and a photo backdrop set up, complete with props and costumes! The weather was perfect and turnout for the event was spectacular!



above photos ©Debbie Roos

Wild Pony Tales, Horsekateers and Low Riders headed for State!

The North Central District Horse Show was held on May 22nd at the Hunt Horse Complex in Raleigh! As a qualifier for the 4-H State Horse Show, competition was fierce and the showgrounds were busy. Headed to state this year are Horsekateers Julie Dickerson, Taylor Cloer, Caroline Lucas, Kayla Amy, Kali Willard, Kirsten Gregory, Leah Nelson, and Low Riders Sasha Swift-Scanlan, Anna Roberson, Karlie Wiggins, Riley Spohn, Kaitlyn Berly and Maddie Crowder.



UP NEXT... BUTTERFLY LIFE CYCLES!

MEET THE

Painted Lady Butterfly

Also known as the cosmopolitan butterfly.

Found across the globe, the painted lady offers an exciting educational experience for young students.



To compliment our poultry embryology project, our other big school enrichment project is raising Painted Lady butterflies in the classroom. The butterflies are a less intensive of a project than the chicks and ducks are, but offer the same learning experience of watching the life cycle and learning about embryology in a real world scenario.

Our butterflies are from Carolina Biological, and arrive as larvae. Each classroom raises about 30 to 40 butterflies, and the will release them into the world!



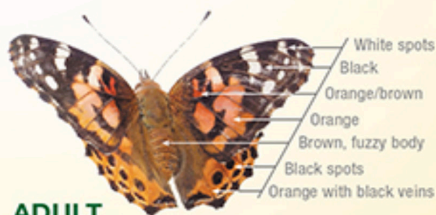
EGG

- Light green color
- Spherical shape
- Laid singly on a plant
- Temperature affects speed of development



LARVA

- Undergoes 5 molts
- Grows approximately 1 1/4 inches long
- Changes color as it grows
- Forms bristles
- Produces a silk button to suspend from
- Suspends head down from prolegs in a "J" shape



ADULT

- Reach productive maturity in 5 to 7 days
- Wing span is approximately 2 1/2 inches
- Female can lay up to 500 eggs in her lifetime
- Adults live up to 10 to 14 days
- Migrations consist of several generations of offspring



CHRYSALIS

- Brownish with gold flecks
- Soft for first few days
- Wiggles as a defense mechanism
- Adults emerge in 7 to 10 days

GO BUTTERFLY HUNTING IN YOUR BACKYARD!

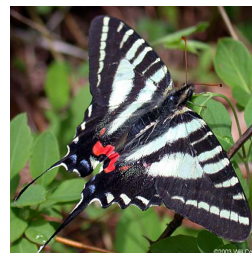
North Carolina is home to many butterfly species who love our warm southern habitat! See if you spot some of these in your backyard or garden!



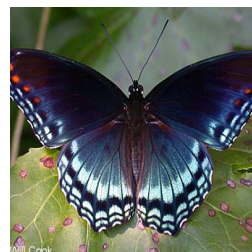
GREAT
PURPLE
HAIR-
STREAK



GREAT
SOUTH-
ERN
WHITE



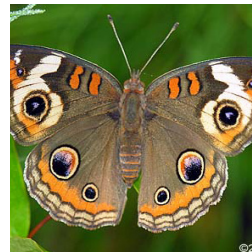
ZEBRA
SWALLOW-
TAIL



RED
SPOTTED
PURPLE



MEADOW
FRITILL-
LARY



COMMON
BUCKEYE

Chatham County Cooperative Extension
 PO Box 279
 Pittsboro, NC 27312

NONPROFIT ORGANIZATION
 US POSTAGE PAID
 PITTSBORO, NC
 PERMIT NO. 65

June 4-J6 Calendar

Sunday	Monday	Tuesday	Wednesday	Thursday	Friday	Saturday
For more details on any of these activities and dates, see online at chatham.ces.ncsu.edu or call 919-542-8202			1	2	3	4
5	6	7	8	9	10	11
12	13	14	15	16	17	18 District Activity Day
19	20	21	22	23	24	25
26	27	28 Poultry Judging	29	30		

NC Citizenship Focus

Adventure Day Camp Week One

Adventure Day Camp Week Two

THANKS FOR READING OUR NEWSLETTER! HAVE SOME SUGGESTIONS OR IDEAS FOR THE NEXT ONE? EMAIL CAROLYN.JOHNSON@CHATHAMNC.ORG!

Distributed in furtherance of the acts of Congress of May 8 and June 30, 1914. North Carolina State University and North Carolina A&T State University commit themselves to positive action to secure equal opportunity regardless of race, color, creed, national origin, religion, sex, age, veteran status or disability. In addition, the two Universities welcome all persons without regard to sexual orientation. North Carolina State University, North Carolina A&T State University, U.S. Department of Agriculture, and local governments cooperating.